



Hong Kong

Causeway Bay

Shop 2102, 21/F, Causeway Bay Plaza, Phase 1, 489 Hennessy Road
☎ 2915 3388 📞 Whatsapp: 9482 2116

Central

Room 1005, 10/F, Melbourne Plaza, 33 Queen's Road Central
☎ 2522 6811 📞 Whatsapp: 9482 0006

Kowloon

Cheung Sha Wan

21/F, Tins Enterprises Centre, 777 Lai Chi Kok Road
☎ 2332 3366 📞 Whatsapp: 9438 1987

Mongkok

Room 1920, 19/F, Argyle Centre (Phase 1), 688 Nathan Road
☎ 2395 2300 📞 Whatsapp: 9380 1513

New Territories

Shatin

Shop 46A, 3/F, Hilton Plaza, 3-9 Shatin Centre Street
☎ 2692 8666 📞 Whatsapp: 9438 1986

Macau Shop

Macau, Avenida da Praia Grande No. 371, Edif. Keng Oui 5/B
☎ (853) 2836 6039 📞 Whatsapp: (853) 6666 3213

Head Office

21/F, Tins Enterprises Centre, 777 Lai Chi Kok Road,
Cheung Sha Wan, Hong Kong
Tel : 2332 3366 Fax : 2744 2313
Non-office Hour Support Hotline : 8209 1111
E-mail : celkimed@celki.com
Web Site : www.celki.com
www.celkicare.com

E-shop :



www.mycelkishop.com.hk

Please check the latest
centre locations with
the QR code or browse:
www.celki.com



"Relief"

Oxygen Support Program



Breathe Well • Feel Better

Relief O2
Support Program

Celli VitaAire was established in 1987 and has become part of the **VitaAire** network since July of 2007. It was the first home respiratory care company in Hong Kong introducing long term home oxygen therapy, sleep apnea management and other home healthcare services. Celli VitaAire continues to introduce and promote the use of these advance medical equipment for the benefit of the patients.

Global Support: Oxygen Concentrator and Sleep Device customers of Celli VitaAire can enjoy technical support and services at more than 30 countries with **VitaAire** presence.

Long-Term Oxygen Therapy

Long-Term Oxygen Therapy is the common treatment for the following diseases associated with hypoxemia & hypoxia:

- Chronic Obstructive Pulmonary Disease
- Neurodegenerative disease
- Cardiac failure
- Other respiratory failure
- Cancer
- Preterm infant

Understanding Chronic Obstructive Pulmonary Disease

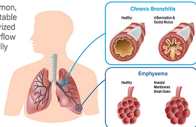
Chronic Obstructive Pulmonary Disease (COPD) is the fifth leading cause of death in Hong Kong, and further increases in its prevalence and mortality can be predicted in the coming decades.

COPD is a common, preventable and treatable disease. It is characterized by persistent airflow limitation that is usually progressive and associated with an enhanced chronic inflammatory response in the airways and the lung to noxious particles or gases. COPD is caused

by a mixture of small airway disease (obstructive bronchiolitis) and parenchymal destruction (emphysema), the relative contributions of which vary from person to person.¹

The most commonly encountered risk factor for COPD is tobacco smoke, while other non-smoking risk factors included occupational dust particles, air pollution, chemicals, bacteria and virus infection. Tobacco smoking continues to be a major cause of COPD (80%-90%). Medical professionals point out that COPD is easy to be ignored due to the lack of symptoms in the initial stage, and it is not curable, hence **quit smoking** is the best way to prevent COPD.¹

Symptoms of COPD include dyspnea, chronic cough, chronic sputum production. Severe patient would feel the shortage of breath when doing exercise or walk upstairs. When the situation gets worst, they would feel breathlessness even when they are walking or at rest.



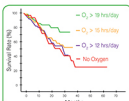
Benefit of Long-Term Oxygen Therapy (LTOT) on COPD



COPD is an irreversible chronic disease; the therapy can only prevent further deterioration but no cure! Fortunately, LTOT improves hypoxemia and prevents hypoxia, and has been shown to **INCREASE LIFE EXPECTANCY, IMPROVE QUALITY OF LIFE, AND DECREASE HOSPITALIZATION.**

Improve Life Expectancy

British Medical Research Council (MRC) study compared hypoxic patients receiving oxygen for 15 hours/day, including the hours of sleep, with patients receiving no oxygen. This trial demonstrated that oxygen was associated with a significant 15% reduction in mortality.



The Nocturnal Oxygen Therapy Trial (NOTT), comparing continuous oxygen therapy (average 19 hours / day) with therapy for 12 hours / day, including the hours of sleep, demonstrated a **32% reduction in mortality using continuous oxygen.**²



Decrease Hospitalization

In hypoxemic COPD patients, long-term oxygen therapy is associated with a reduction in hospitalization.³

Improve Quality of Life

LTOT improves the quality of life by:

- Improving neuropsychological conditions (general alertness)
- Increasing walking distance (6MWT = +36% / +95m)
- Reducing length of stay in hospital
- Improve self-caring ability

Source:

1. Hong Kong Lung Foundation Global Initiative for Chronic Obstructive Lung Disease 2007
2. NOTT Trial, Ann Intern Med 1980; 93: 359V MRC Trial Lancet 1981; 11681 / ATS and ERS, 2004; 79-99
3. Eur Respir J 2002; 20: 48-52
4. GOLD guideline 2011 / Standards for the Diagnosis and Management of patients with COPD, ATS and ERS, 2004; 79-99

Celki VitalAire is fully devoted to support your LTOT treatment by providing:

1. Education & Continuous Follow-up

- Education:** We educate patients and their families on equipment operation and how to improve their comfort level through different tools, such as "Energy Saving Position" and "Oxygen User Manual".
- Continuous Motivation:** We motivate patient to achieve good compliance and prevent exacerbation.
- Continuous Follow-up:** We assist and advise patient on how to overcome difficulties and resolve problems.



2. Reliable & Safe Devices

Oxygen therapy patients rely heavily on the oxygen concentrator; therefore, we provide leading manufacturing brands from overseas (refer to P.9-10).



3. Encourage Mobility

We encourage mobility by providing portable oxygen devices to patient to go outdoor, allowing them to re-integrate themselves into the society, and to improve their quality of life (refer to P.13-16).



4. Strong Support

Safe & Trustworthy Services

On-time Delivery: We ensure the continuity of patient's oxygen therapy by delivering the oxygen concentrator to their homes before discharge. In addition, we provide oxygen cylinder refill 5 days a week.

Self-owned Oxygen Manufacturing Facility: Celki VitalAire holds licenses from Hong Kong Fire Services Department for oxygen manufacturing, oxygen cylinder storage and transportation. Our oxygen meets the medical grade safety standard.

Safety Instruction: We educate patient and caretaker on all risks prevention for a secure treatment.

Worry-Free and Reliability Services

Initial Quality Assurance Visit and Oximetry Test: We ensure the correct usage of devices and good understanding on maintenance by patient. Besides, we monitor patient's therapy effectiveness by conducting oximetry spot test.

Regular Home Visit: We perform home visit regularly to ensure the therapy is undergoing smoothly.

24 Hours Emergency Service: Qualified technician is available at your service 365 days a year, 24 hours a day, to handle emergency situation.

High Effectiveness

Our **touRiCK** tele-monitoring device allows us to monitor and evaluate remotely the performance and usage hours of the oxygen concentrator, and patient's health information.



Celki VitalAire Oxygen Plant



Celki VitalAire PSA oxygen manufacturing plant was established in 1994 and had introduced portable oxygen cylinders to Hong Kong market for home oxygen use. In 2001, our production capacity had been increased by an additional manufacturing facilities which allowed us to provide customers with even better oxygen therapy services and medical grade oxygen.

Celki VitalAire: Legal and Quality Controlled Oxygen Cylinder

- PSA technology generated oxygen is widely accepted and utilized in Hong Kong and worldwide for the treatment of LTOT inside and outside hospital.
- To ensure the oxygen purity can meet the safety standard of medical grade oxygen (USPX111, 93% OXYGEN), the production process is strictly monitored according to ISO9001 system.
- According to the regulation, the neck of the oxygen cylinder must be dyed white.
- The quality control record would be marked on each oxygen cylinder.
- Each season, quality test will be conducted by the laboratory. Besides, High Pressures Gas Cylinders Hydraulic Retest would be performed in qualified testing laboratory in every 5 years to ensure that both oxygen and oxygen cylinders are perfectly safe.



Holder of Safety Licenses

Celki VitalAire holds licenses from the Hong Kong Fire Services Department for oxygen generation, oxygen cylinder storage and transportation. All cylinders are imported from America, with Celki logo imprinted, and receive the safety certificate issued by Hong Kong Fire Services Department. This ensures our oxygen is completely safe and reliable.



Quick and Safe Delivery

Celki VitalAire owns the License of the Conveyance of Dangerous Goods in Category 2 by vehicles from Hong Kong Fire Services Department, hence we can deliver the oxygen cylinders to our customers quickly, safely and legally.



"Relief"

Oxygen Support Program

With our 25 years of experience in servicing LTOT users, all our 100 Celki VitalAire staffs are well trained to serve our patients even better. Now, our home use oxygen concentrator rental customers can entitle to the "Relief" oxygen support program **FREE-OF-CHARGE!**

* Second year and onward, oxygen concentrator rental patient will continue to entitle to "Relief" oxygen support program free-of-charge. Oxygen concentrator purchaser can renew the "Relief" oxygen support program at an annual fee.



What is TeleTREK?

TeleTREK is a revolutionary tele-monitoring solution that links patients, home medical equipment, Celki and medical professionals via www.celkicare.com. TeleTREK is built-in or installed onto patient's home medical equipment.



TeleTREK

With TeleTREK, LTOT patient would benefit from early discharge from hospital, while their compliance and equipment performance information is continuously monitored through TeleTREK. Data will be transmitted wirelessly to Celki's server group and stored in www.celkicare.com, which physician and Celki's technician can monitor the vital health sign and equipment performance. This secures the initial treatment of LTOT and other chronic disease.

Therapeutic, diagnostic or monitoring devices such as oxygen concentrator and oximeters and monitoring devices can be connected to TeleTREK and information is stored in www.celkicare.com.

•• Oxygen purity, flow rate, usage time of oxygen concentrator

Login www.celkicare.com to view report/ data



Home Oxygen Concentrator



TeleTREK Device



Celki Server



Technical Team Login
www.celkicare.com

TeleTREK Real Case Sharing

1-3 May

Pattern of midnight desaturation was observed through TeleTREK (red color line)



5 May

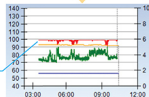
After investigation, we found out that patient would take off cannula by herself at midnight, which her relatives did not aware of this.



After Patient Education

9 May

After educating patient and her relatives, patient felt more comfortable when putting on her cannula and her blood oxygen saturation became stable. (red color line)



Appreciation from patient's relatives

Her daughter is thankful to us that we closely monitor her mother's health condition, and impressed by the usefulness and versatility of the TeleTREK system.

High Quality Home Oxygen Concentrator

A reliable and durable oxygen concentrator is crucial to the therapy; therefore, we provide premium quality oxygen concentrators for your treatment.

Home oxygen concentrator is simple to operate, even for the elderly. Simply connect the power source and the oxygen concentrator will extract and filter out oxygen from air continuously without putting additional chemical materials.

Oxygen
Concentrator
Information



Everflo 5L

- The most popular, reliable and durable oxygen concentrator.
- Up to 5 litre/min oxygen flow rate.
- Low noise level at 43dB.



VisionAire 5L

- A relatively small size oxygen concentrator.
- Up to 5 litre/min oxygen flow rate.
- Low noise level at 40dB.



Newlife Intensity 10L

- Designed to meet high oxygen flow requirement of up to 10 litre/min oxygen flow rate.
- Quiet and efficient operation with "PowerPurge™" technology.



Specifications

Oxygen Concentrator Model	Everflo 5L	VisionAire 5L	Newlife Intensity 10L
Flow Rate (Litre/minute, (LPM))	0.5 - 5	1 - 5	1 - 10
Oxygen Purity	90% + 6%, -3%	90% + 5.5%, -3% ^[1]	2 - 9 LPM : 92% ± 3% ^[1] 10 LPM : 90% ± 3%
Dimension (H x W x D) cm	58 x 38 x 24	52.8 x 35.8 x 29.2	69.9 x 41.9 x 36.8
Weight (KG)	14	13.6	26.3
Power Consumption (W)	295	290	590
Noise Level (dB)	43	40	50

[1] Based on one atmospheric pressure at 21°C

Oxygen Concentrator Accessories

Standard Nasal Cannula

- Provides 7 and 16 feet nasal cannula.
- For infant, children and adult.
- (Recommend to replace standard nasal cannula every month to keep nostrils from being hurt by hardened cannula.)



Oxygen Mask

- 7 feet long, covering nose & mouth



Nasal Cannula

- 2 feet long (To be used with connecting tube).
- Recommend to replace nasal cannula every month to keep nostrils from being hurt by hardened cannula.



Connecting Tube

- To be used with nasal cannula. With 7, 15 and 25 feet to choose.
- Can connect to a maximum length of 50 feet



Connector

- Connect between oxygen mask and connecting tube

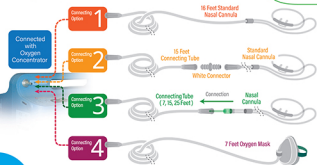


Bubble Humidifier (On therapist's request)

- Fill up with sterile water to humidify oxygen.
- (User with oxygen prescription at 4LPM or less may not need to use a humidifier. Please seek medical advice in case of doubt.)



Connections & Combinations of Oxygen Concentrator Accessories



Pulse Oximeter

Pulse oximeter measures the blood oxygen saturation and pulse of patient, and it is widely used by physicians and nurses. Pulse oximeter is getting popular and can be used for the spot check of blood oxygen saturation at home.

Nonin Onyx® Vantage 9590 Pulse Oximeter

- PurePAT® SpO₂ technology provides accuracy in the widest range of patients (such as light-to-dark skinned patients, good-to-low perfusion, etc).
- Suitable for children through adults (Finger thickness ranges 0.3 inch – 1 inch).



Oximeters with alarm functions, suitable for continuous monitoring:

Nonin PalmsAT® 2500A Handheld Pulse Oximeter

- Light and easy to use
- Provides up to 72 hours of on-board data storage
- Suitable for infant, child and adults



Nonin 7500 Handheld Pulse Oximeter

- PurePAT® SpO₂ technology provides accuracy in the widest range of patients (such as light-to-dark skinned patients, good-to-low perfusion, etc)
- Provides up to 70 hours of on-board data storage
- Suitable for infant, child and adults



Masimo Radical-7 Pulse Oximeter

- Customize the display to view the parameters
- Easily navigate and configure settings using the high-definition, multi-touch display
- 4-hours battery life for extended monitoring as a handheld device
- Suitable for infant, child and adults



Mobility

Freedom on Oxygen

A study confirmed that "... considerable improvements in exercise tolerance may result from the use of portable oxygen in severe airflow obstruction... Portable oxygen therapy enables patients with severe airflow obstruction to walk further rather than faster." With the proven benefits of portable oxygen therapy, you can continue to maintain your lifestyle by choosing a suitable portable oxygen device.*

Mobility device allows LTOT patients to take parts in outdoor activities, meeting friends, dining out, which helps them to re-integrate themselves into the society, hence improve their quality of life.

In fact, Celki VitalAire works hard to encourage mobility and provide various solutions that suit for different needs for outdoor mobility.

The Public Bus Services (Amendment) Regulation 2019 was effective on January 1, 2020, allowing access to buses for persons carrying compressed oxygen cylinders for self-medical use when travelling.

When boarding, you should

- 1 In maximum carry 2 oxygen cylinders on board for self-use
- 2 Inform the driver number of oxygen cylinders carrying
- 3 Have a seat in lower deck or the Priority Seats
- 4 Inform the driver when alighting

Solution with Oxygen Cylinder

Oxygen cylinder is the most popular option for outdoor activities: it is easy to operate and more economical. Besides, its size suits to carry around.

Standard Oxygen Cylinder

- Various sizes to choose from, depends on personal needs.
- Model (Size): C, D, E

Oxygen Regulator

- Connect to the pin of oxygen cylinder for checking the pressure inside the oxygen cylinder, allow customer to know when the oxygen cylinder needs to be refilled.

Oxygen Conserving Device

- With oxygen conserving device, usage time of oxygen cylinder can be prolonged.
- Evolution™**: Minimum 2-year battery life (avg. 4 hrs/ daily usage).



Oxygen Cylinder Specifications

Online Order

<http://www.celkicare.com/gasorder>



Model (Size)	Oxygen Capacity (L)	Weight (kg)	Height (cm)
C	255	1.7	38
D	425	2.5	49.5
E	680	3.5	72.5

* Outer diameter of Oxygen Cylinder is 11.1 cm

Oxygen Cylinder Consumption Time Using Oxygen Regulator (Hour : Minute)

Model (Size)	Oxygen Flow Rate (Litre/Min)				
	1	2	3	4	5
C	4:15	2:07	1:25	1:03	0:51
D	7:05	3:32	2:21	1:46	1:25
E	11:20	5:40	3:46	2:50	2:16

Using Oxygen Conserving Device (Hour : Minute)

Model (Size)	Oxygen Flow Rate (Litre/Min) ***				
	1	2	3	4	5
C	17:00	8:30	5:40	4:15	3:24
D	28:20	14:10	9:26	7:05	5:40
E	45:20	22:40	15:06	11:20	9:04

* Consumption time calculation assumes 20 breaths per minute

* Actual consumption time may vary depending on users in different conditions. These data are for reference only.

+ Pulse-Dose Flow Setting of Transportable / Portable Oxygen Concentrator is not the same as Continuous Flow and prescription of medical professionals shall prevail.

* A. Davidson: Supplemental oxygen & exercises ability in chronic obstructive airways disease; Thorax 1988;43:965-971
Ambulatory Oxygen Therapy: Exercise and Survival with Advanced COPD. Thomas L. Petty. Respiratory care 2000



Transportable Oxygen Concentrator

Transportable and portable oxygen concentrator allows customer to go beyond the time and location constraint, allowing them to enjoy a long outdoor time by public transportation, especially suits for active person.

Simply Go

Transportable Oxygen Concentrator

- Offer continuous flow and pulse-dose delivery in one lightweight device. Equipped with mobile cart for easy transportation.
- Sleep mode function: it has a more sensitive triggering level and delivers a softer, more comfortable pulse for sleeping.
- Unique Pulse Mode: If no breath is detected for a period of time, the device will change to a fixed rate of 12 breath per minute automatically and with an alarm. Ensure safety and reliability.
- Size: 25.4(H) x 29.2(W) x 15.2(D) cm



Eclipse 5

Transportable Oxygen Concentrator

- Suitable for outdoor and long term home therapy use. Equipped with wheels for easy transportation.
- Size: 49(H) x 31.2(W) x 18(D) cm



Simply Go Mini

Portable Oxygen Concentrator

- Weight 5lb only; with touch screen. Easy to use and suit for outing.
- External battery, easy replacement.
- Size: 23.9(H) x 21.1(W) x 9.1(D)cm



Portable Oxygen Concentrator

Inogen G3/G4/G5

Portable Oxygen Concentrator

- Portable, small size and approved by Federal Aviation Administration (FAA) for flight within the United States.
- External battery, easy replacement.
- Size (H x W x D) cm:
Inogen G3: 21 x 22.2 x 7.6
Inogen G4: 18.2 x 15 x 6.8
Inogen G5: 23 x 18.3 x 8.3



Inogen G3



Inogen G4

Inogen G5



Transportable/
Portable Oxygen
Concentrator
Information



		Transportable Oxygen Concentrator		Portable Oxygen Concentrator			
Mobile Oxygen Concentrator Model		Simply Go	Eclipse 5	Simply Go Mini	Inogen G3	Inogen G4	Inogen G5
Continuous Flow (LPM)		0.5 / 1 / 1.5 / 2	0.5 / 1 / 2 / 3	-	-	-	-
Pulse-Dose Flow Settings *		1 - 6	1 - 6	1 - 5	1 - 5	1 - 3	1 - 6
Oxygen Purity		90% + 6%, -3%	90% ± 3%	87% - 96%	90% + 6%, -3%	90% + 6%, -3%	90% + 6%, -3%
Weight (kg)	Body with Battery	4.5	8.1	2.3 (standard battery) 2.7 (large battery)	2.19	1.5	2.59
	Extra Battery	0.7	1.5	0.5 (standard battery) 0.95 (large battery)	0.6 (standard battery) 1.08 (large battery)	0.51 (large battery)	0.34 (large battery)
Battery Duration (Hours)	Continuous Flow ^[1]	0.9	2	-	-	-	-
	Pulse-Dose Flow ^[2]	3.0	4.6	4.5 (standard battery) 9.0 (large battery)	4.5 (standard battery) 9.0 (large battery)	5.0 (large battery)	10 (large battery)
Extra Battery ^[1]		3.0	4.6	4.5 (standard battery) 9.0 (large battery)	4.5 (standard battery) 9.0 (large battery)	5.0 (large battery)	10 (large battery)
Pulse-Dose Flow Operating (Hours)							

* Pulse-Dose Flow Setting of Transportable / Portable Oxygen Concentrator is not the same as Continuous Flow and prescription of medical professionals shall prevail.

[1] Calculate on Continuous setting of 2.

[2] Calculate on Pulse-dose setting of 2.

[3] Battery operating hours varies with different usage condition.

Which solution to choose for mobility?

Package

Lifestyle

Equipment



Home Oxygen Concentrator

1 Unit



Oxygen Cylinder with Regulator

1 & 1
Cylinder Regulator

2 Cylinders

1 & 1
Cylinder Regulator



Oxygen Conserving Device

1 Unit



Portable Oxygen Concentrator

Select 1 Unit

Remark

- * All packages come with free oxygen cannula & connecting tube
- # Oxygen cylinder refill at additional charge

Purchase /
Monthly Rental *

Purchase /
Monthly Rental +
Cylinder Refill **

Purchase /
Monthly Rental +
Cylinder Refill **

Purchase /
Monthly Rental +
Cylinder Refill **



Transportable
Oxygen Concentrator

Suits for outdoor use or travel. Available for weekly or monthly rental, or purchase.
Please contact Celki VitalAire for information: 2332 3366

Home



- Stay at home / elderly home most of the time

Secure



- Stay home most of the time
- One oxygen cylinder uses as backup in case of electricity failure
- Need to have occasional outdoor activities (e.g. medical consultation)

Mobile



- Stay home most of the time
- One oxygen cylinder uses as backup, another one uses for outdoor activities.
- Look for some social activities e.g. family dine out once a week
- Regular outdoor activities.

Active



- Stay home sometimes
- One oxygen cylinder as backup
- Active and high mobility
- Frequent outdoor activities and social life